

ए बी एस टूल और डाई प्राइवेट लिमिटेड ABS Tool and Die Private Limited

Estd.- 2013

INDIA



About Us

ABS Tool and Die Private Limited is a firm specializing in Precision Components, Tool and Product Engineering, Complete manufacturing solution with design, Manufacturing and integration of automated production systems for :

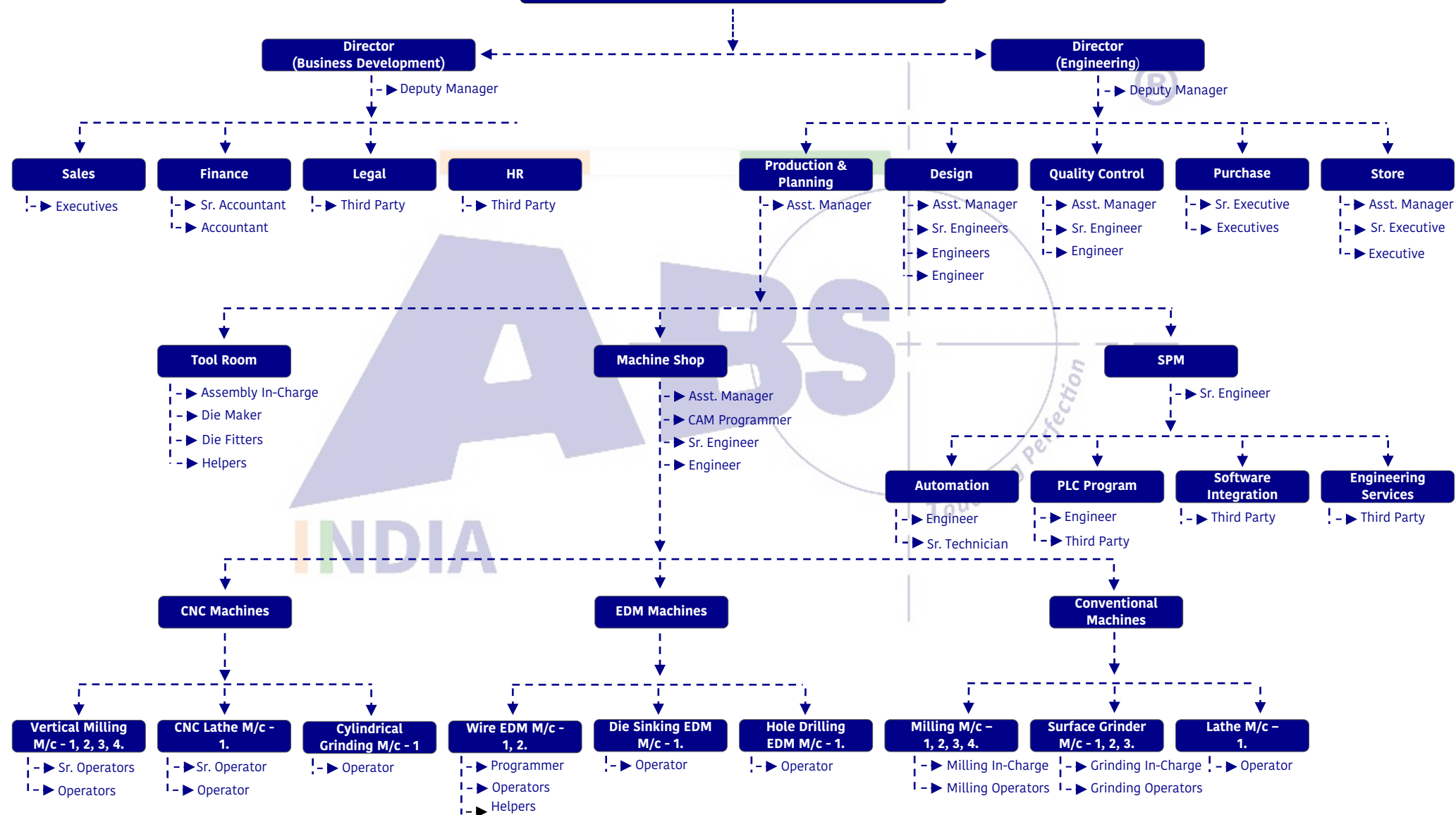
- Defence & Aerospace Industry Components.
- Precise Components Machining Centre.
- Tool and Die.
- Jigs and Fixtures.
- Testing Equipment.
- Industrial Automation.
- Special Purpose Machines for :
 - i. Component Traceability Solution.
 - ii. Visual Inspection Machine.
 - iii. Laser Marking Machine.
 - iv. Auto Gauging Machine.
 - v. Precise Machining (Milling, Facing, Boring & Drilling)



Touching Perfection

Organisation Chart

ABS TOOL AND DIE PRIVATE LIMITED





Manufacturing Capabilities



CNC MILLING MACHINE WITH 4TH AXIS



CNC MILLING MACHINE



CNC MILLING MACHINE



CNC LATHE



WIRE EDM (NP 500 L)



PROFILE PROJECTOR



ASSEMBLY SECTION



CONVENTIONAL SECTION - MILLING



CONVENTIONAL SECTION - GRINDING

Manufacturing Capabilities

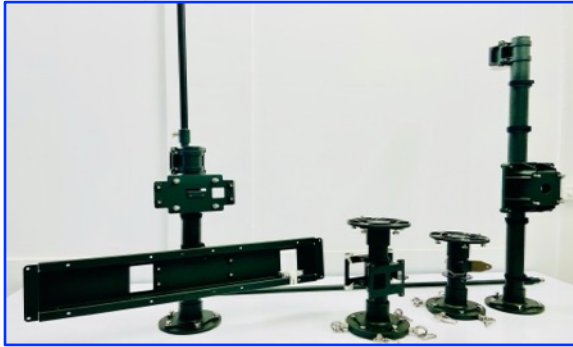
SL No.	Machine Details	Make	Specification	Bed Size	Quantity	Accuracy	Year of Purchase
I.	Wire EDM (NP 500 L)	Exetek - Taiwan	300 x 500 mm	750 x 950 mm	01 no.	0.005 mm	2023
II.	Wire EDM	Electronica - India	300 x 400 mm	800 x 600 mm	01 no.	0.01 mm	2005
III.	CNC Vertical Milling Machine with 4 th Axis	Manford - Taiwan	1050 x 620 mm	600 x 1200 mm	01 no.	0.02 mm	2022
IV.	CNC Vertical Milling Machine	YCM - Taiwan	1020 x 520 mm	520 x 1120 mm	01 no.	0.01 mm	2021
V.	CNC Vertical Milling Machine	Manford - Taiwan	650 x 450 mm	510 x 850 mm	01 no.	0.02 mm	2015
VI.	CNC Vertical Milling Machine	Manford - Taiwan	850 x 500 mm	500 x 1000 mm	01 no.	0.01 mm	2024
VII.	CNC Lathe	Manford - Taiwan	Ø 300 x 650 mm	-	01 no.	0.02 mm	2021
VIII.	Die Sink EDM	Sparkonix - India	250 x 450 mm	850 x 500 mm	01 no.	0.05 mm	2016
IX.	Hole Drilling EDM	S&T- India	320 x 440 mm	-	01 no.	0.05 mm	2023
X.	Milling M/c with DRO	Maximart - Taiwan	1320 x 430 mm	800 x 375 x 450 mm	01 no.	0.05 mm	2015
XI.	Milling M/c with DRO	Manford - Taiwan	1320 x 430 mm	800 x 375 x 450 mm	02 nos.	0.02 mm	2013
XII.	Milling M/c	S&T - Taiwan	1320 x 430 mm	800 x 375 x 450 mm	01 no.	0.02 mm	2015
XIII.	Cylindrical Grinding	Micromatic - India	Ø 200 x 300 mm	-	01 no.	0.005 mm	2024
XIV.	Laser Marking Machine	IPG - Germany	100 x 100 mm	90 x 500 mm	01 no.	0.01 mm	2021
XV.	Lathe Machine	Preciturn - Taiwan	6'	700 x 240 mm	01 no.	0.02 mm	2013
XVI.	Surface Grinding Machine	Ramanna - India	8" x 18"	380 x 220 x 300 mm	04 nos.	0.005 mm	2017

- * Design Software - Solid Works 2023
- * CAM Software - Solid Cam 2023

Manufacturing Capabilities

SL No.	Instruments Details	Make	Specification	Quantity	Accuracy	Year of Purchase
I.	Coordinate Measuring Machine	Accurate	600 x 400 mm	01 no.	0.0005 mm	2018
II.	2D Height Master	Electronica	0 - 700 mm	01 no.	0.0001 mm	2024
III.	Rockwell Hardness Testing Machines	Mitutoyo (Japan)	-	01 no.	0.5 mm	2018
IV.	2D Height Gauge	Mitutoyo (Japan)	0 - 600 mm	01 no.	0.01 mm	2018
V.	Profile Projector	Mitoya (India)	150 x 250 mm	01 no.	0.01 mm	2015
VI.	Slip Gauge	Mitutoyo (Japan)	102 Pcs - Grade 0 & 1	01 set	0.005 mm	2018
VII.	Pin Gauge	Mitutoyo (Japan)	1 - 10 mm	01 set	0.01 mm	2018
VIII.	Bore Gauge	Mitutoyo (Japan)	0 - 150 mm	01 set each	0.005 mm	2018
IX.	Digital Height Gauge	Mitutoyo (Japan)	0 - 300 mm	01 no.	0.01 mm	2018
X.	Vernier Caliper	Mitutoyo (Japan)	-	20 nos.	0.01 mm	2018
XI.	Surface Plate	Ayumech (India)	630 x 630 mm	01 no.	0.02 mm	2018
XII.	Inside Micrometer	Mitutoyo (Japan)	30 - 400 mm	01 no.	0.01 mm	2018
XIII.	Inside Dial Caliper	Mitutoyo (Japan)	10 - 30 mm	01 no.	0.01 mm	2018
XIV.	Countersink Angle Gauge	Kristeel (India)	60° - 120°	01 no.	1°	2018
XV.	Chamfer Gauge	Kristeel (India)	0.5 - 5.0 mm	01 set	1°	2018
XVI.	Roughness Comparison Specimens	Rubert & Co. (UK)	No. 130	01 set	-	2018

Defence & Aerospace Components



DRONE JAMMER SYSTEM MECHANICAL ASSEMBLY



DRONE JAMMER SYSTEM MECHANICAL ASSEMBLY



DRONE JAMMER SYSTEM MECHANICAL ASSEMBLY



DRONE JAMMER SYSTEM MECHANICAL ASSEMBLY



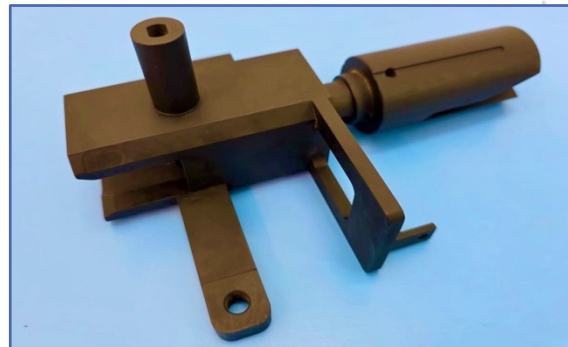
DRONE JAMMER SYSTEM MECHANICAL ASSEMBLY



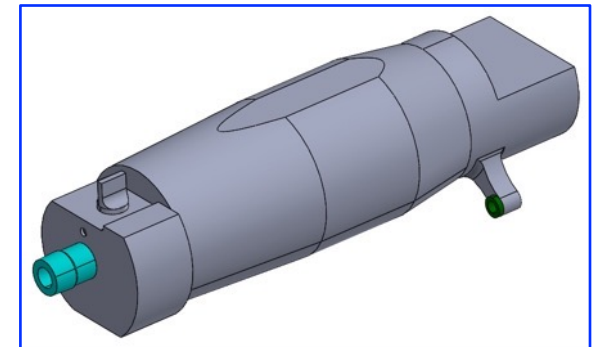
DRONE JAMMER SYSTEM MECHANICAL ASSEMBLY



BUFFER ASSEMBLY



MAGAZINE HOLDER



DUMMY NITROGEN CYLINDER

Defence & Aerospace Components



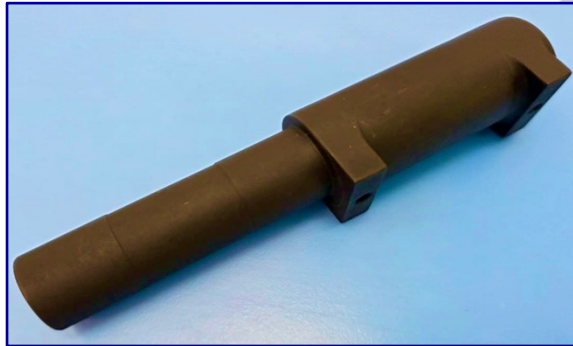
INSAS MOUNTING RAIL



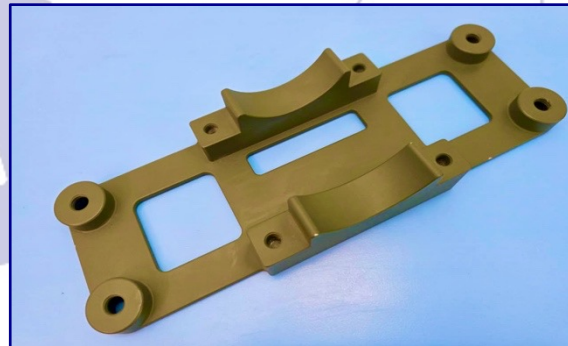
INSAS HANDLE GRIP



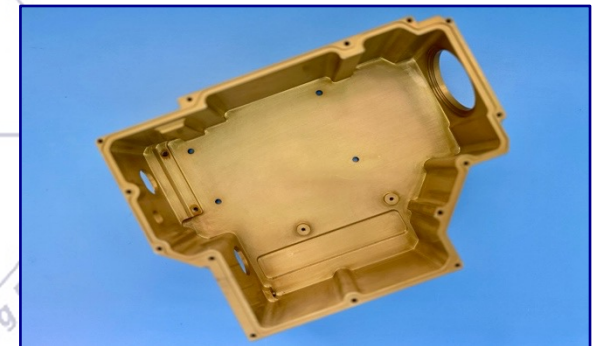
HOLDER



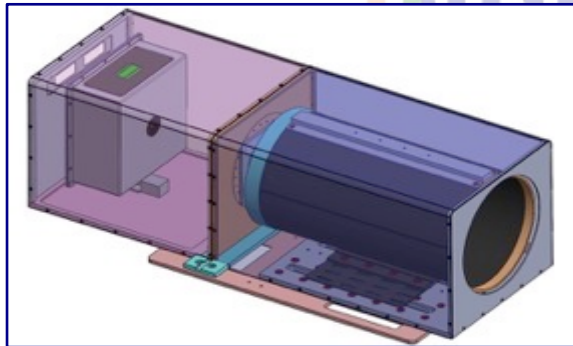
LAUNCHER SHAFT



MOUNTING BRACKET



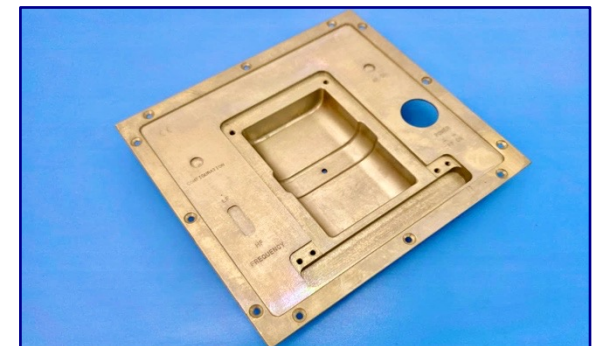
TI CAMERA HOUSING



LENS VISION EQUIPMENT

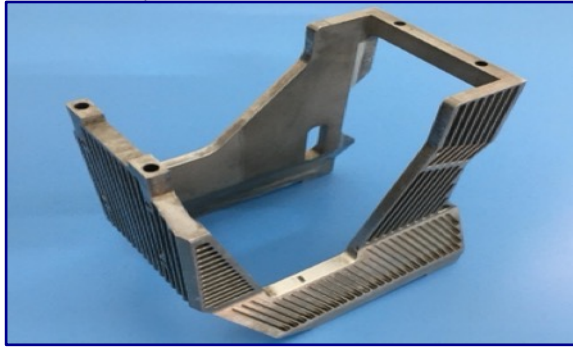


PLATE

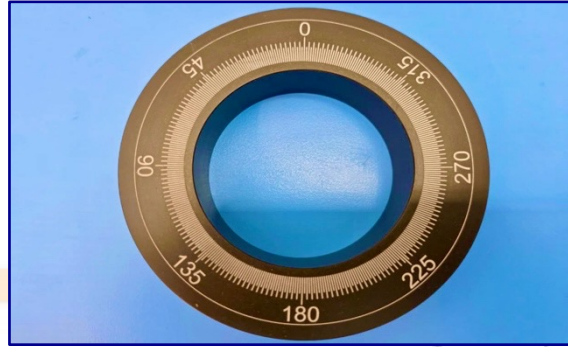


RF PANEL

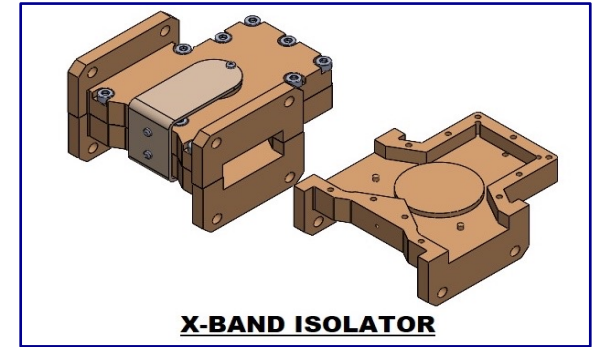
Defence & Aerospace Components



DTR MOUNT

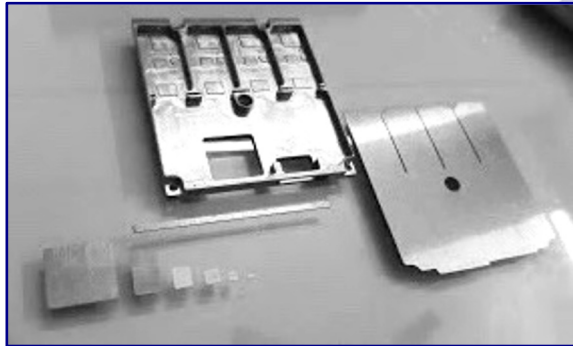


INDEXR PLATE



X-BAND ISOLATOR

X-BAND ISOLATOR



T R MODULE



MOUNTING BRACKET



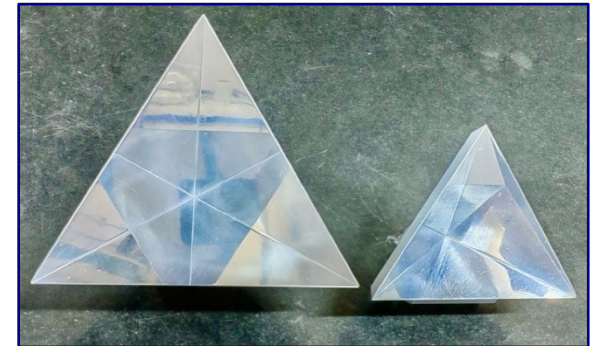
HAMMER



CLOCK HOUSING

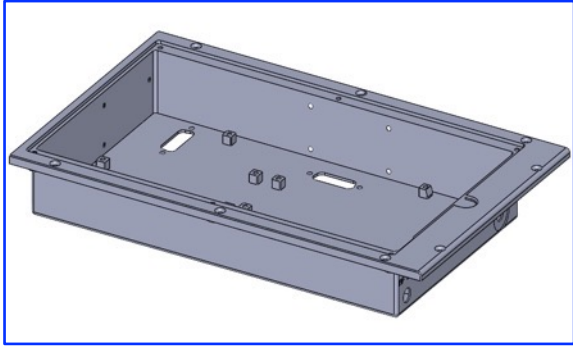


SEAR

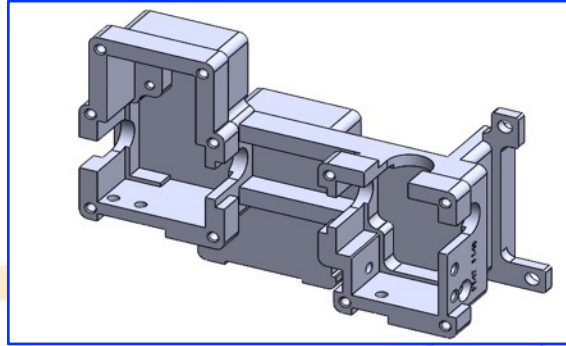


CORNER REFLECTOR

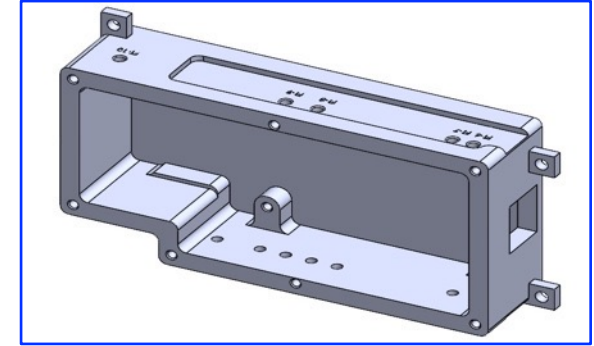
Defence & Aerospace Components



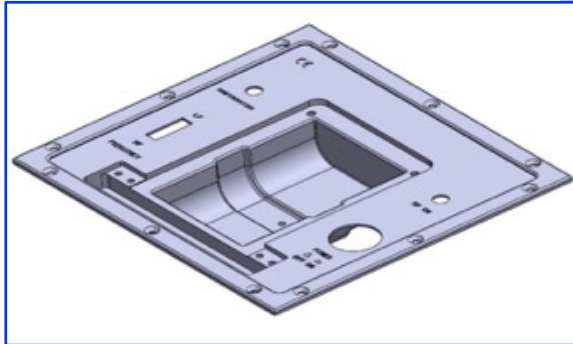
REAR BOX



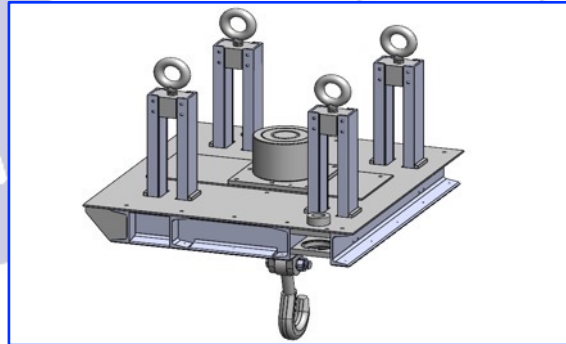
MIXED MODULE



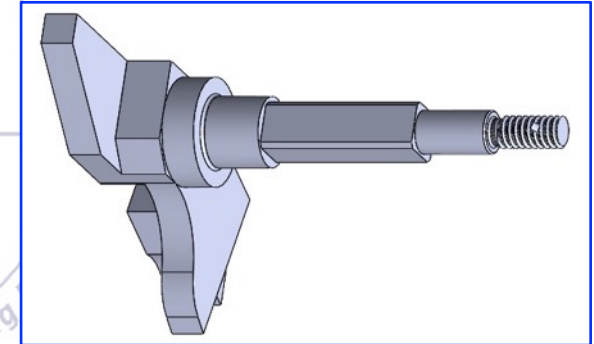
SYNTH & PILOT MODULE



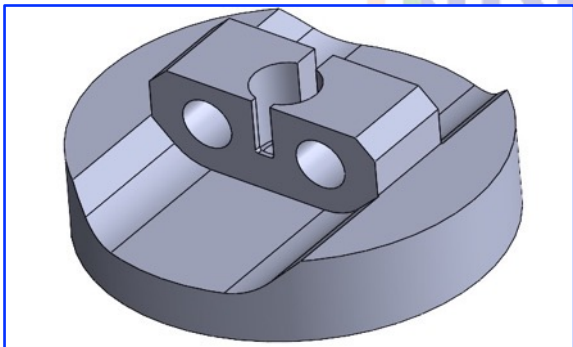
RF PANEL



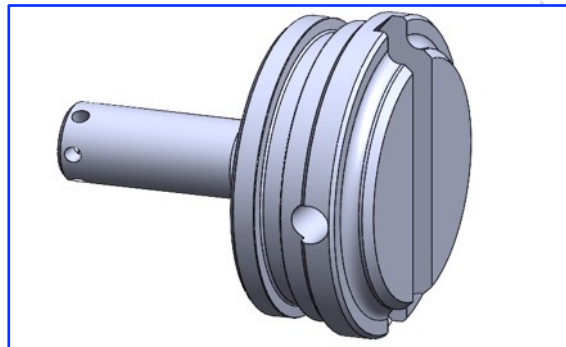
CHARGE SUSPENSION FIXTURE



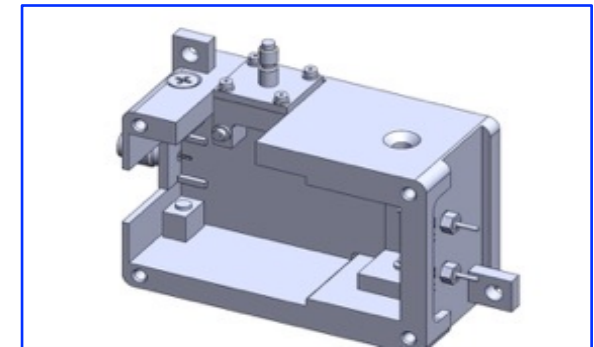
ARM



BASE

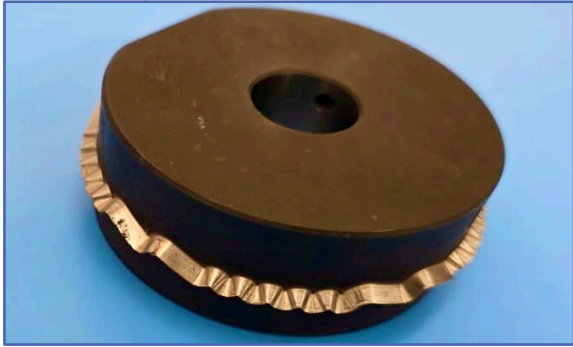


LID

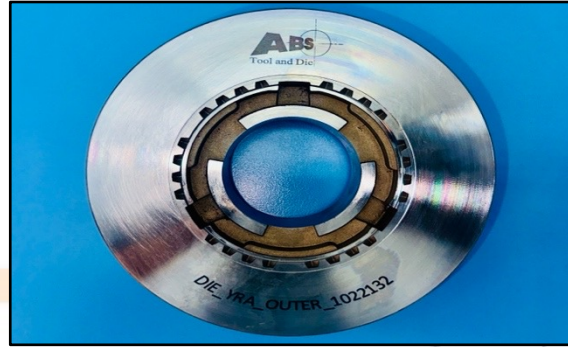


DETECTOR MODULE ASSEMBLY

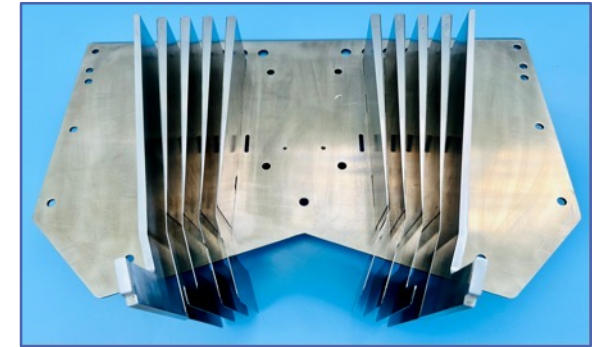
Precision Components



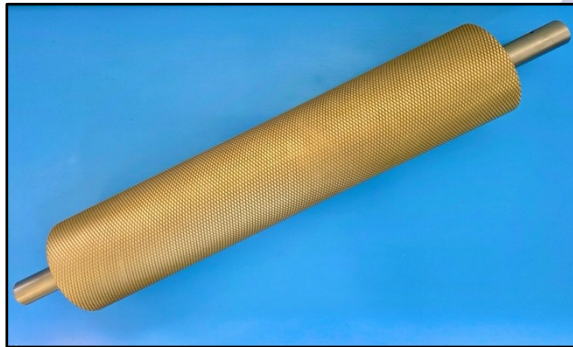
Z PROFILE CUTTER



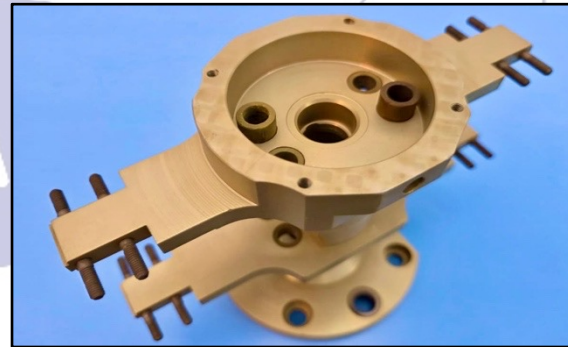
FORGING DIE



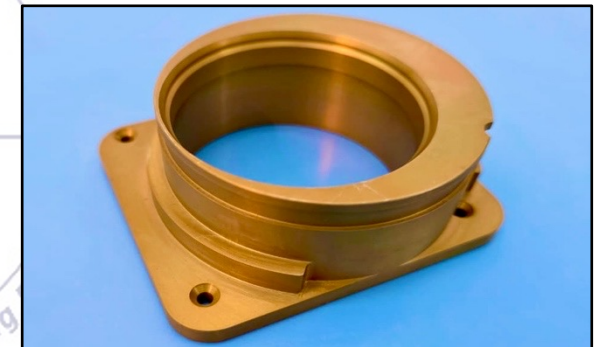
AIGER VANES SET



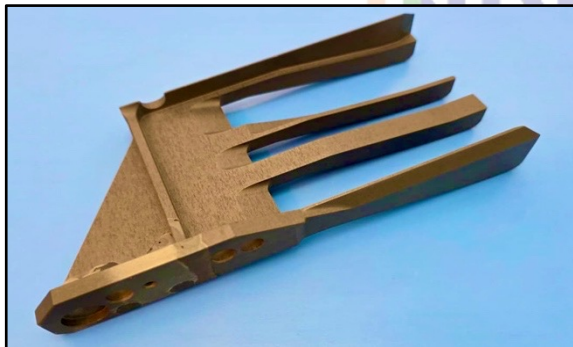
GLUE ROLLER



1ST WHEEL



CENTERING BUSH



FOLDER

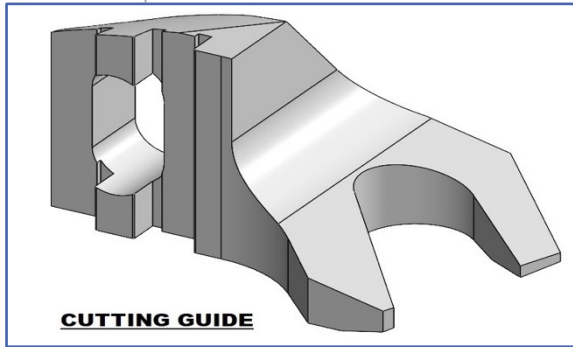


ROD DEFLECTOR

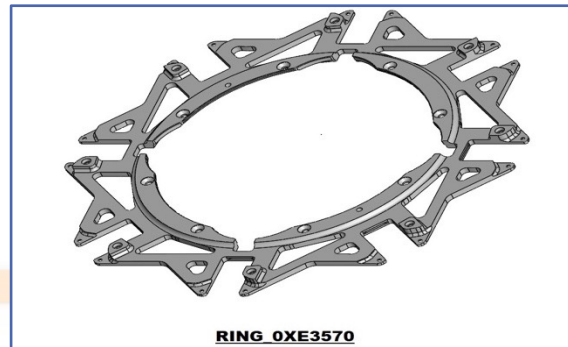


CROSS HATCH TOOL

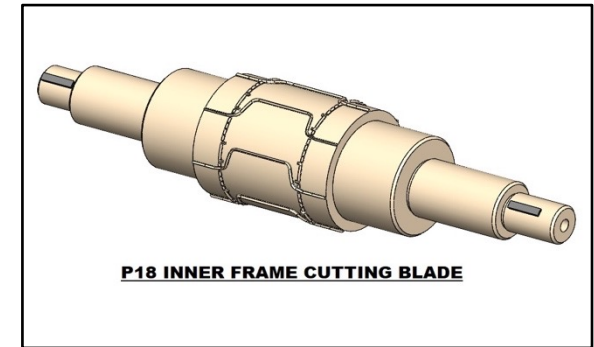
Precision Components



CUTTING GUIDE



RING



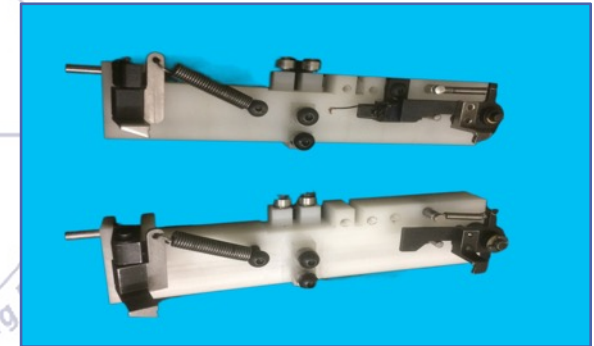
INNER FRAME CUTTING BLADE



REAR SIGHT BASE



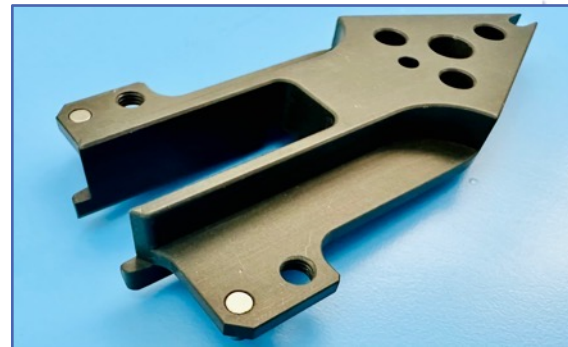
BRACKET FRONT SIDE



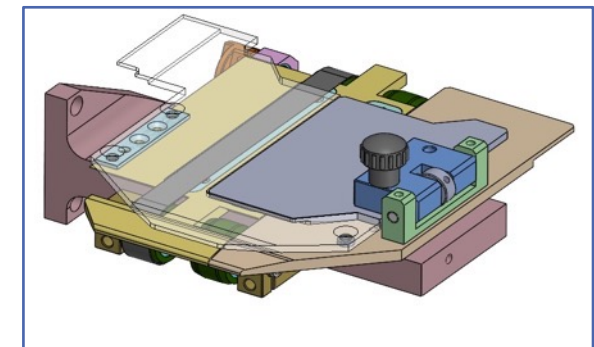
CARD CENTERING ASSEMBLY



TOKEN HOLDER

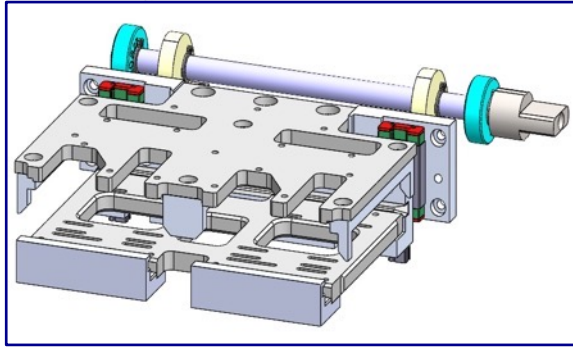


PINCER 2XEAFK20

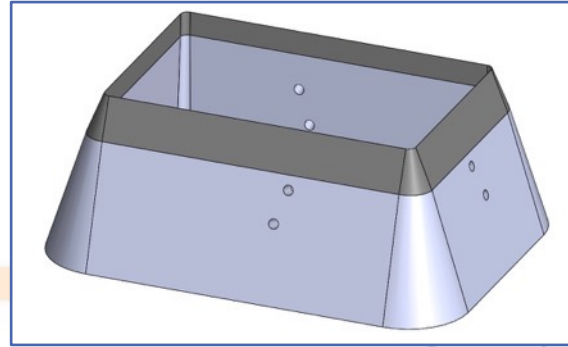


FOIL CENTERING UNIT

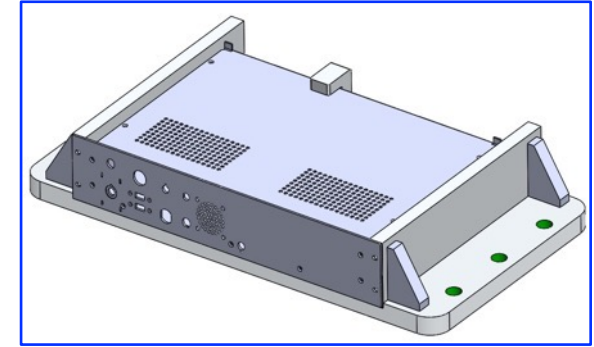
Precision Components



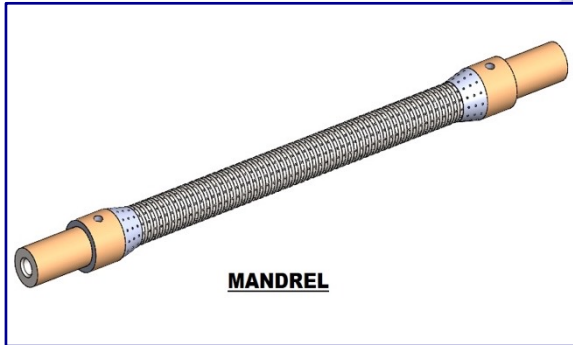
HEAD BLOCK ULIAN ASSEMBLY



PAPER CUTTING DIE

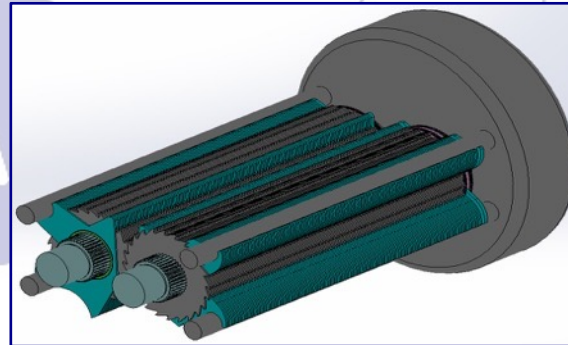


VIBRATION FIXTURE

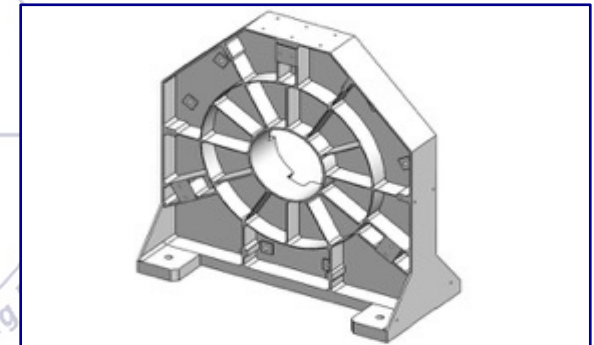


MANDREL

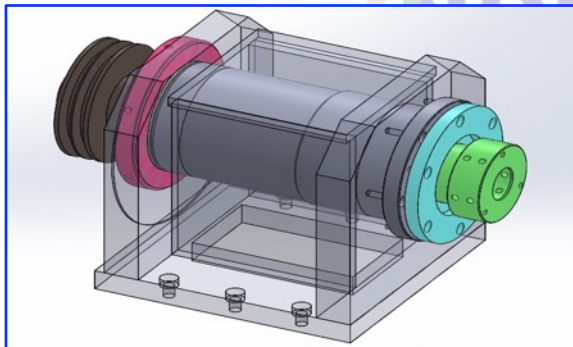
MANDREL



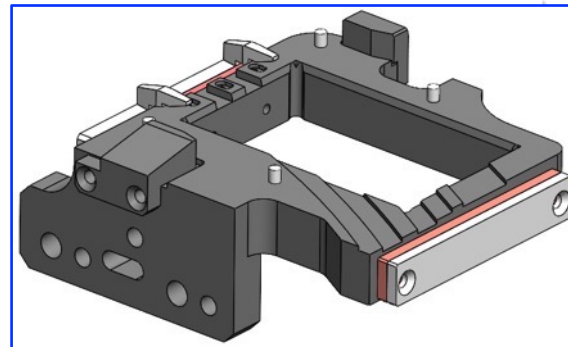
SHREDDER ASSEMBLY



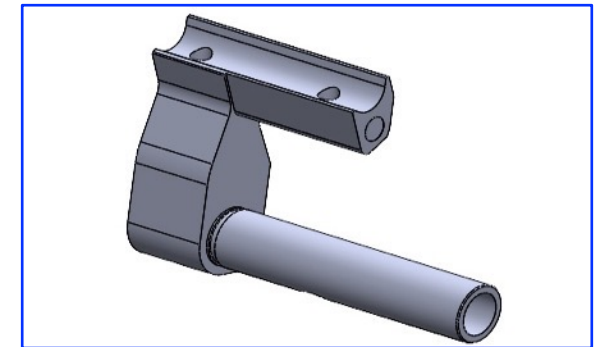
BASE FRAME



HONNING HEAD

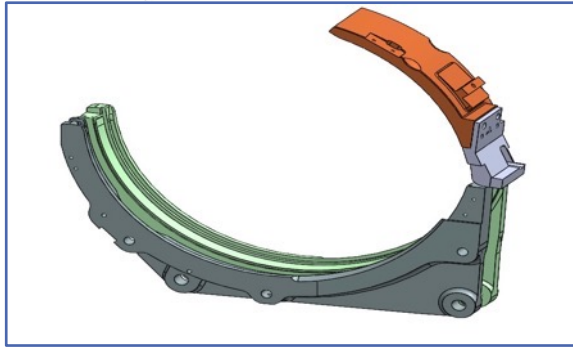


3RD WHEEL POCKET-GDX6

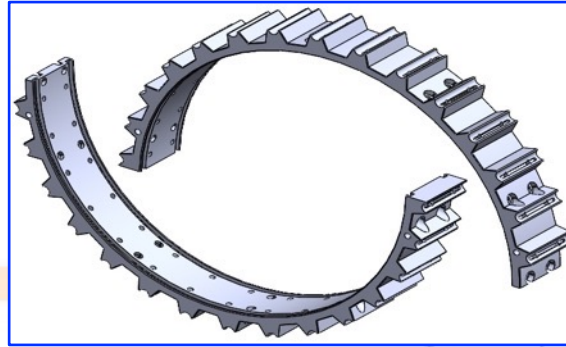


FIX FINGER-7.8 CIGARETTE

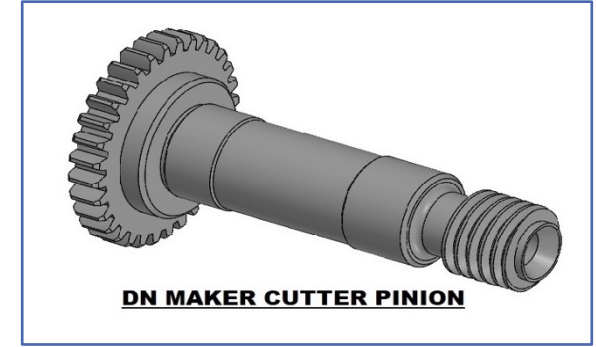
Precision Components



EMPEROR CARD HOLDER ASSEMBLY

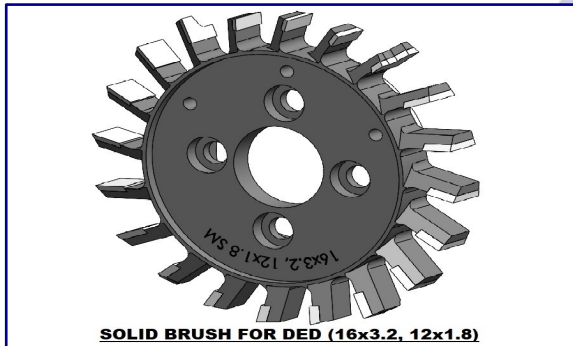


HALF RING SET



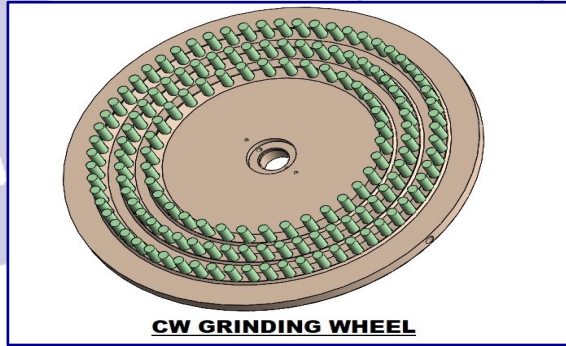
DN MAKER CUTTER PINION

DN MAKER CUTTER PINION



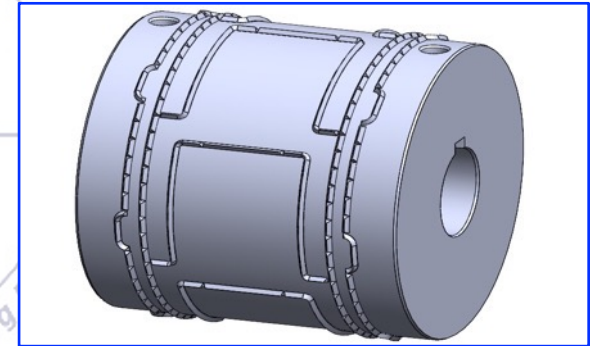
SOLID BRUSH FOR DED (16x3.2, 12x1.8)

SOLID BRUSH FOR DED

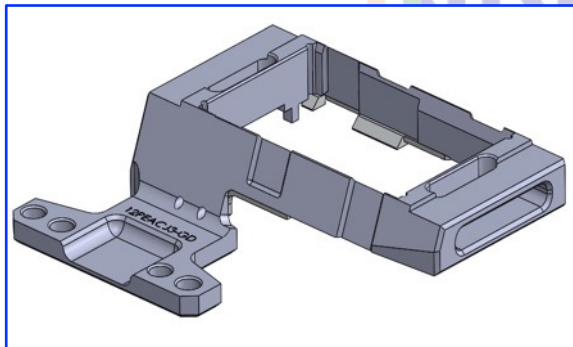


CW GRINDING WHEEL

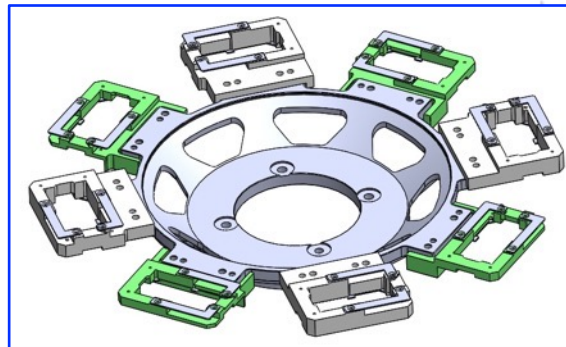
CW GRINDING WHEEL



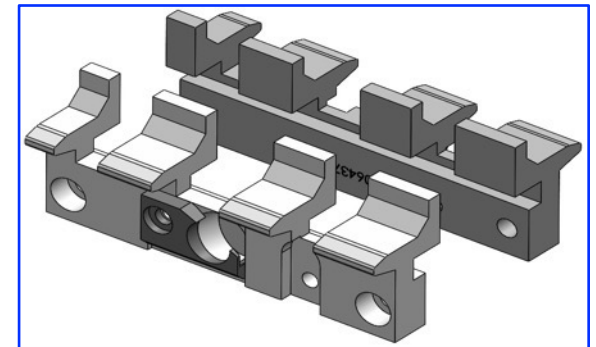
IF NOTCHING & CREASING ROLLER FOR GD X300



4TH WHEEL POCKET SQ-2PEAAQ2

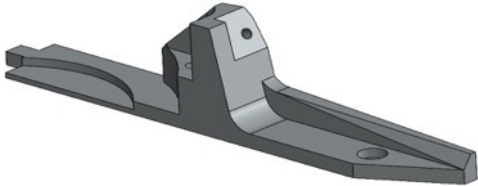


4TH WHEEL ASSEMBLY

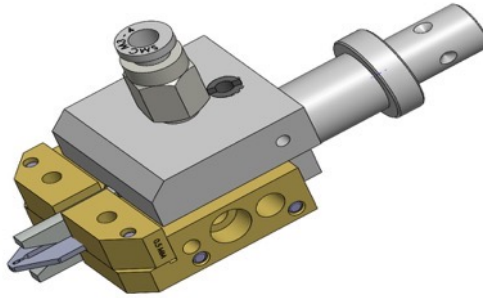


HALF POCKET 5TH WHEEL

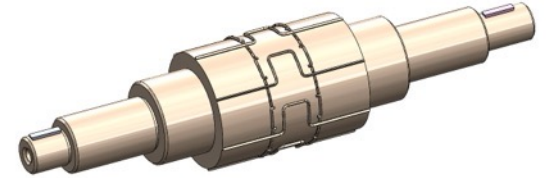
Precision Components



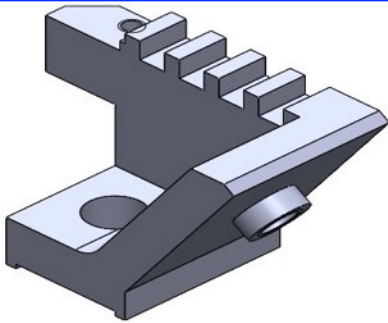
DISC GUIDE



HOLDER BONDING TIP



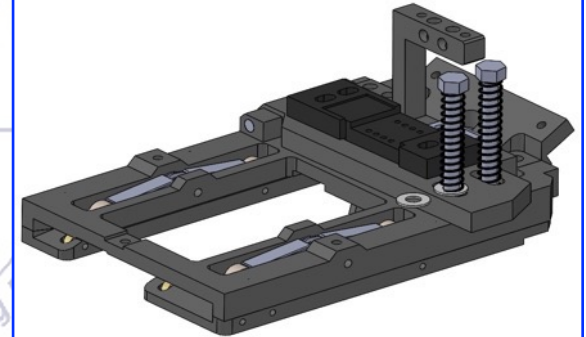
INNER FRAME ROLLER KNIFE



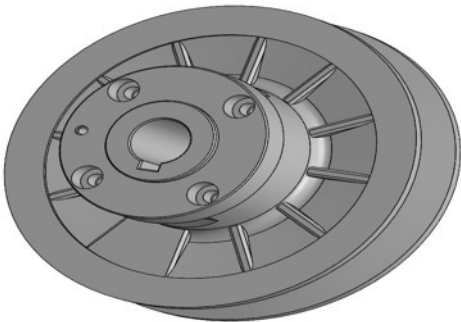
WELDING HEAD MOUNTING BLOCK



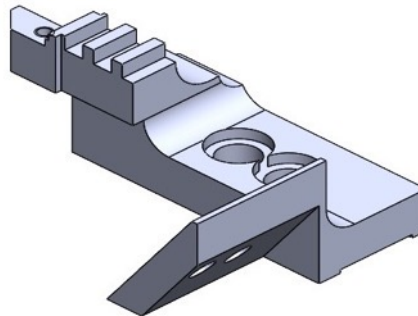
HAMMER



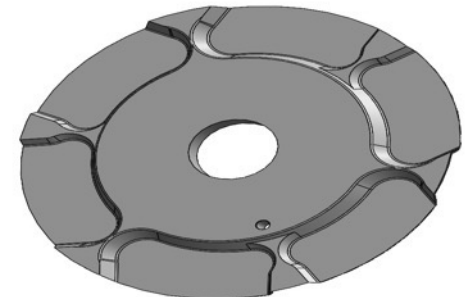
EMPEROR CARD HOLDER ASSEMBLY



PROTOS FEED DRIVEN MULTI VARIABLE PULLEY

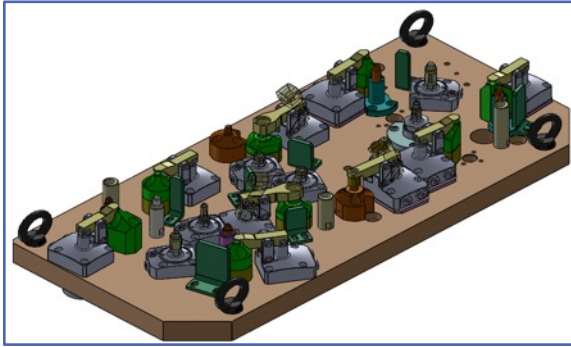


MTT WELDING BLOCK

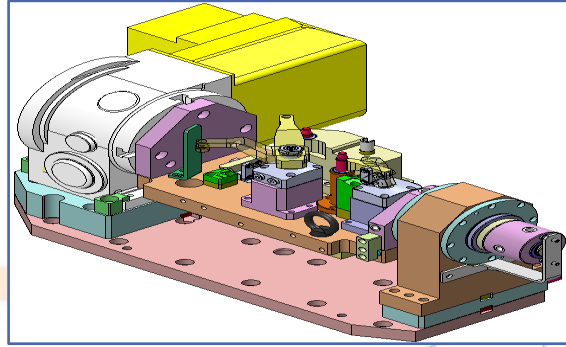


AHSM DENSER END DISK

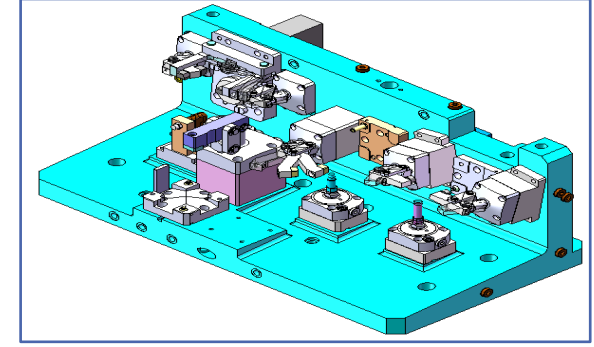
Jigs & Fixture



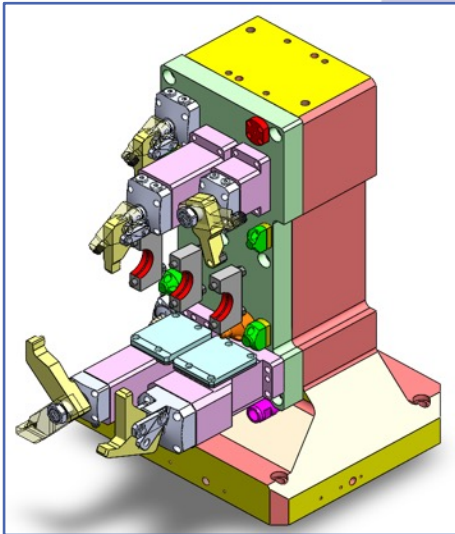
VMC Fixture



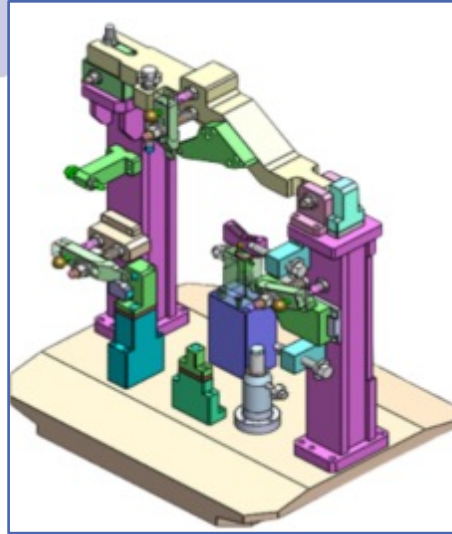
VMC Fixture With 4th Axis



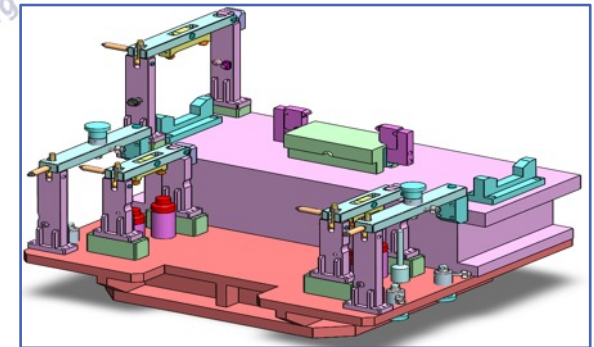
Multiple Part-Loading VMC Fixture



HMC Fixture - Hydraulic

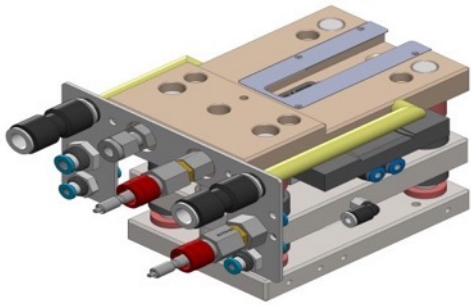


HMC Fixture - Mechanical

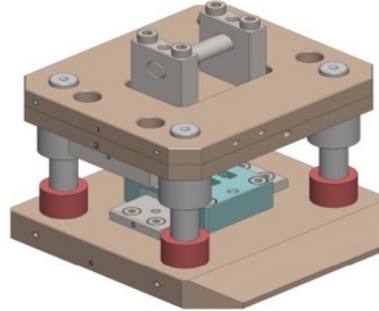


Multiple Part-loading HMC Fixture

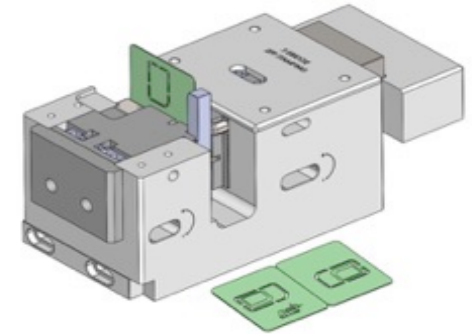
Tool and Die



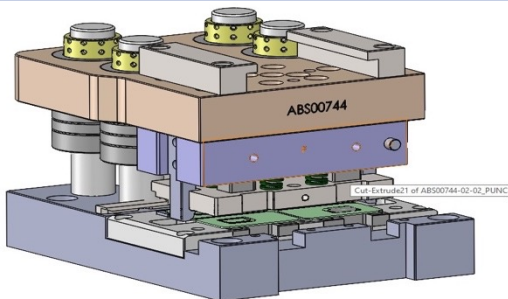
MODULE CUTTING TOOL - MB



GLUE TAPE CUTTING TOOL - MB

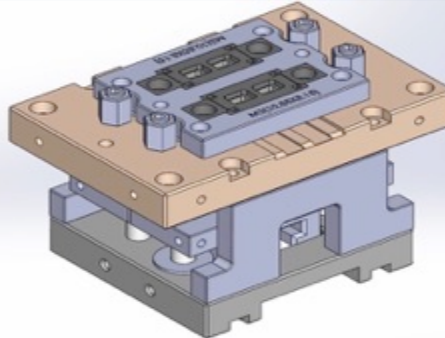


2FF 3 BRIDGE + HALF CARD STAMPING TOOL - MB

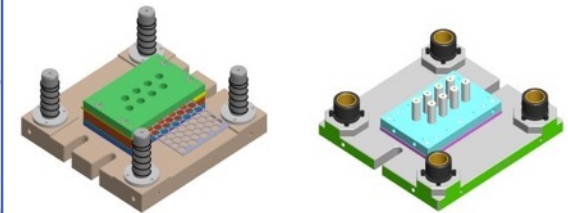


3FF 4 IN 1 RE PLUG TOOL

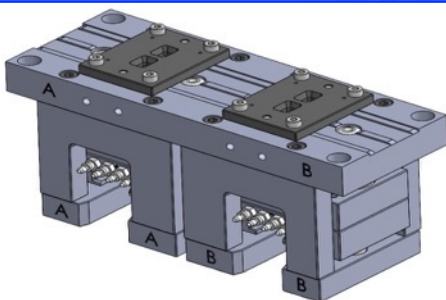
3FF 4 IN 1 RE PLUG TOOL



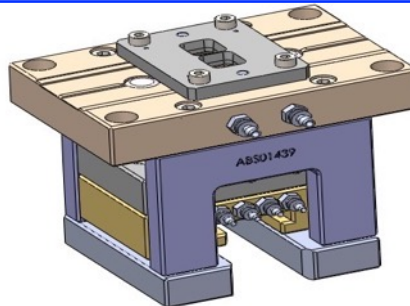
MODULE CUTTING TOOL - CARDMATRIX



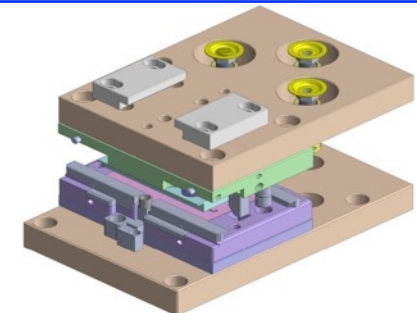
COIN PUNCHING TOOL



MODULE CUTTING TOOL - YMJ

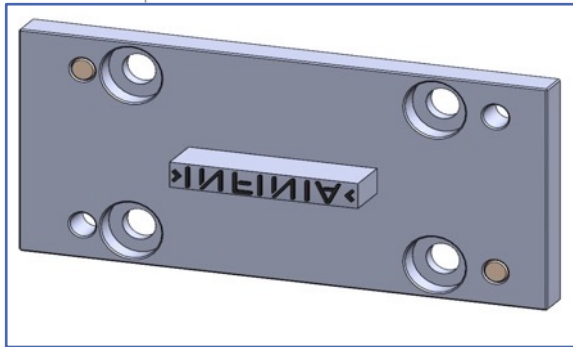


MODULE PUNCH TOOL - YMJ

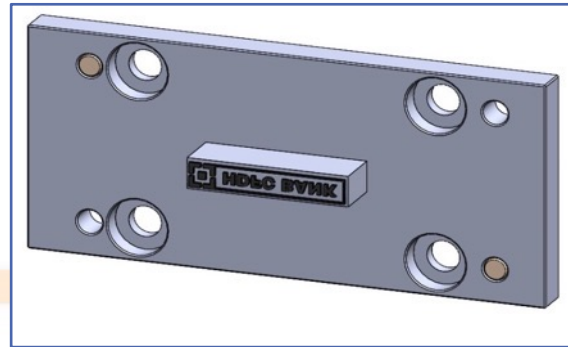


YMJ - PUNCHING TOOL

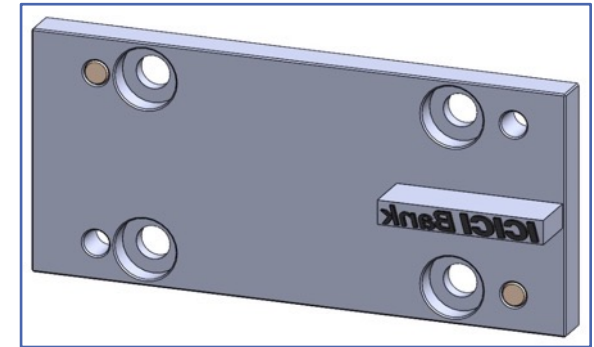
Hot Stamps & Welding Heads



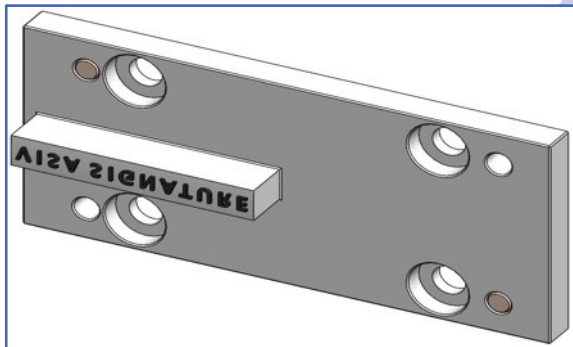
HOT STAMP - INFINIA



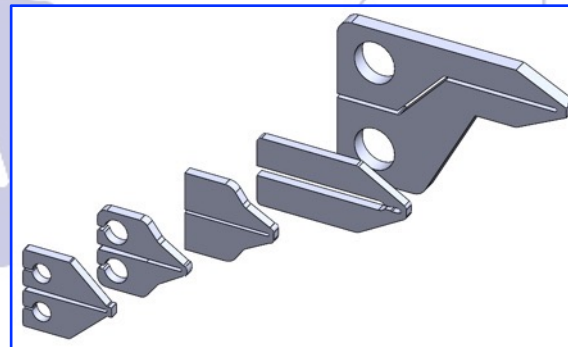
HOT STAMP- HDFC BANK



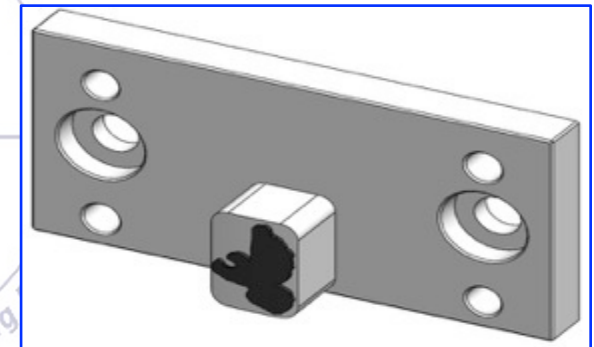
HOT STAMP- ICICI BANK



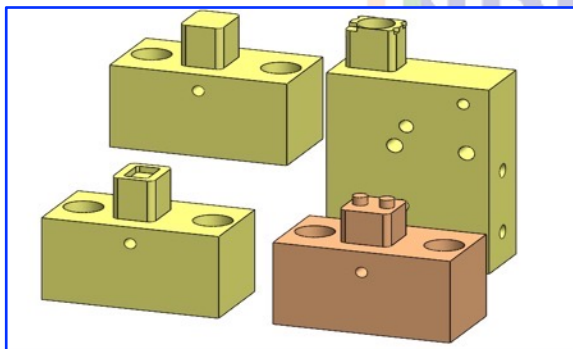
HOT STAMP - VISA SIGNATURE



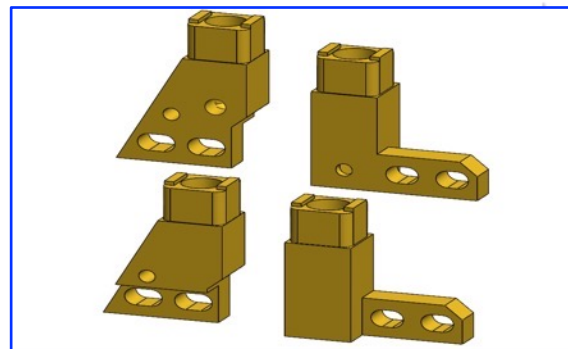
THERMODE



HOT STAMP – SILHOUTED DOVE



WELDING HEAD & TACKING HEAD JG

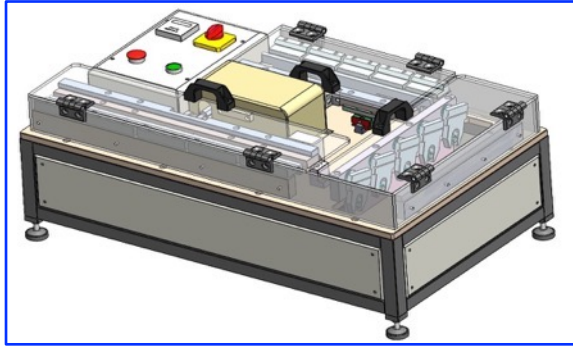


HOT WELD_YMJ-TOT10-5000

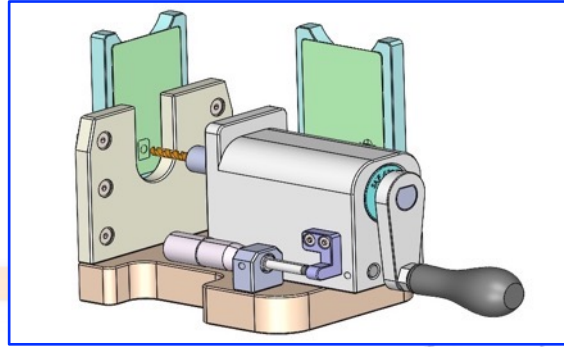


HOT STAMP- GIFT CARD

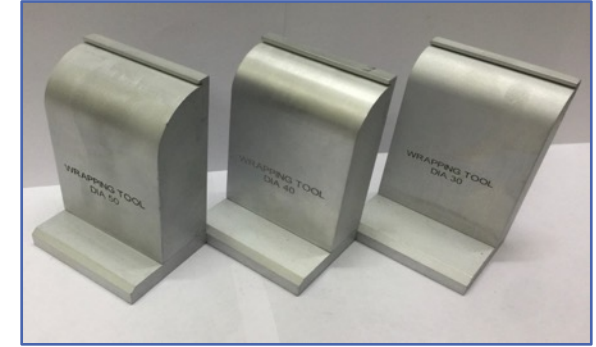
CQM Testing Equipment



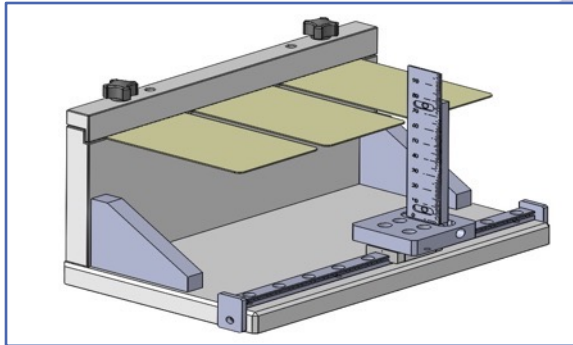
DYNAMIC BENDING AND TORSION TESTER



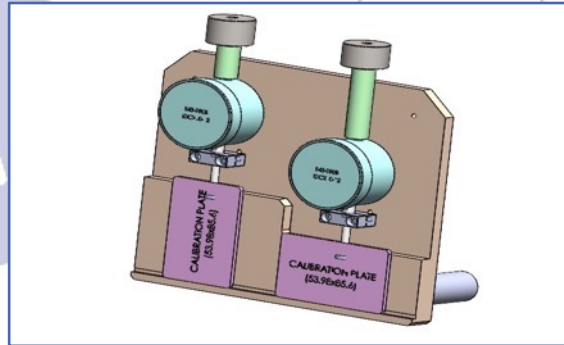
TM-423-P - PREPARATION TOOL FOR MODULE BACK SPOT PRESSURE TEST



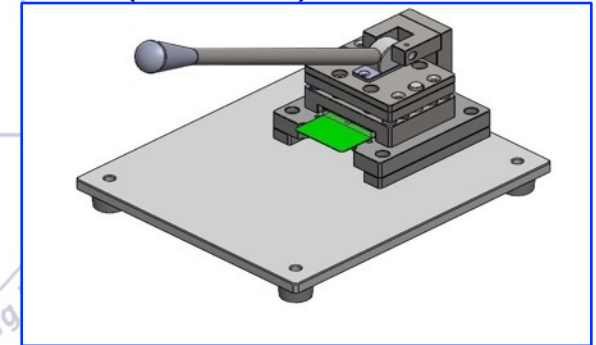
TM-422 - MECHANICAL RELIABILITY TOOL BLOCK (WRAPPING TOOL) - Ø30, Ø40 & Ø50



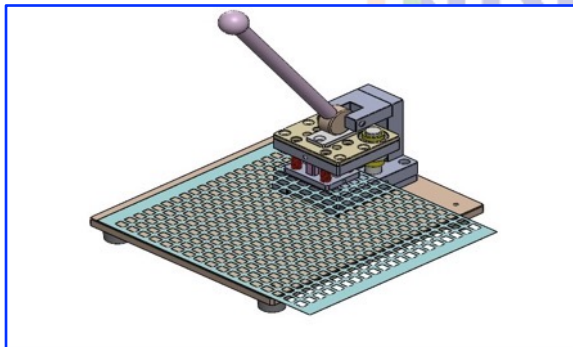
TM-411 - CANTILEVER FIXTURE



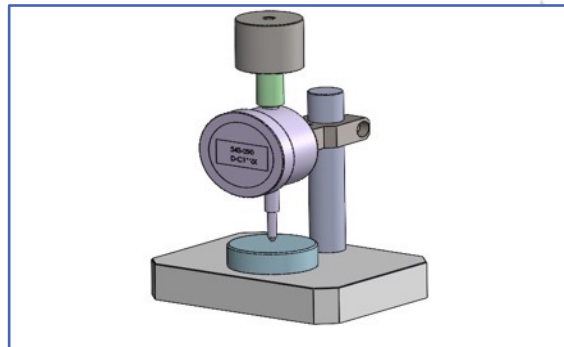
TM-403 - HEIGHT & WIDTH GAUGE -1M



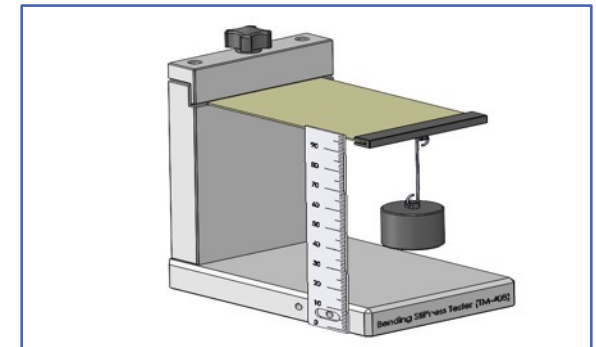
VOID PUNCHING TOOL (MANUAL)



HOLE PUNCHING TOOL - MANUAL

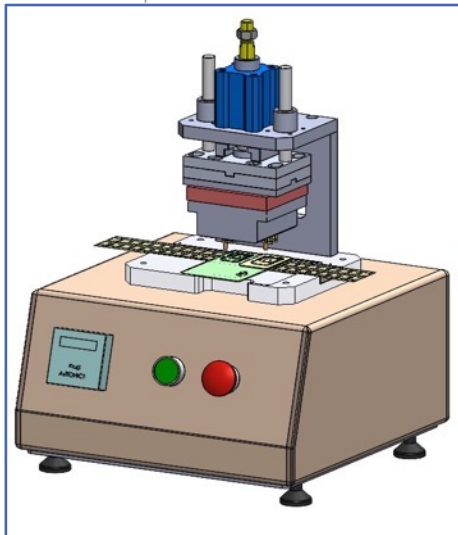


TM-404 - THICKNESS GAUGE -1M

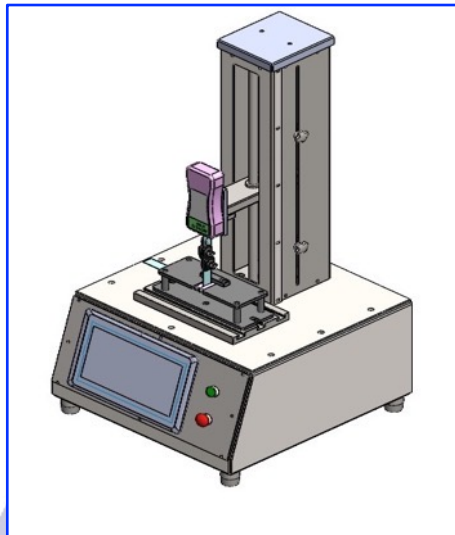


TM-408 - BENDING STIFFNESS TESTER

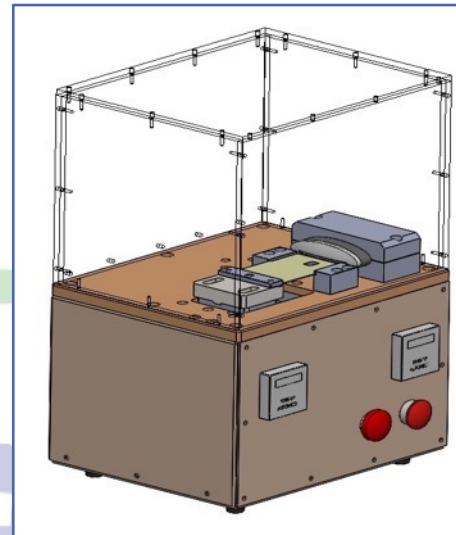
CQM Testing Equipment



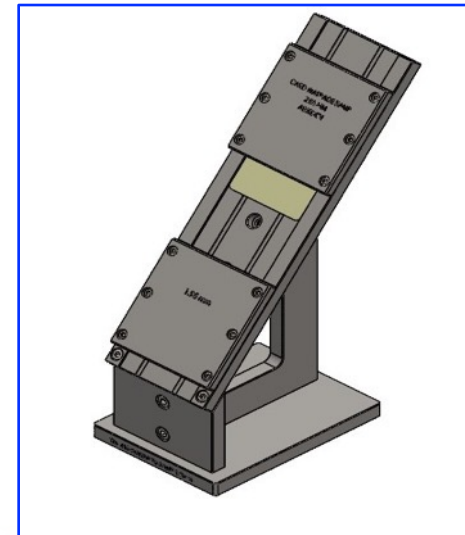
ATR READER -SEMI AUTOMATIC



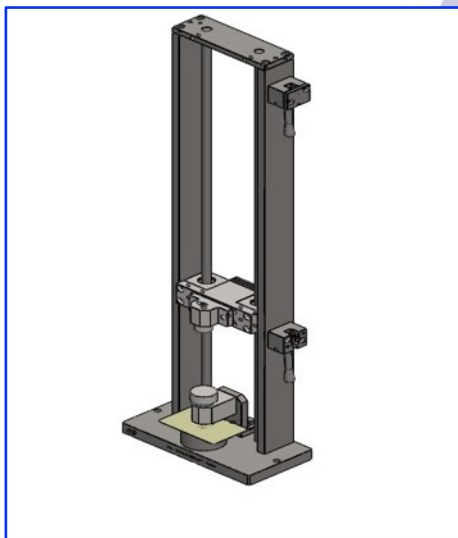
**TM-412-P - PEEL STRENGTH
PREPARATION TOOL**



CARD INSERTION TESTER



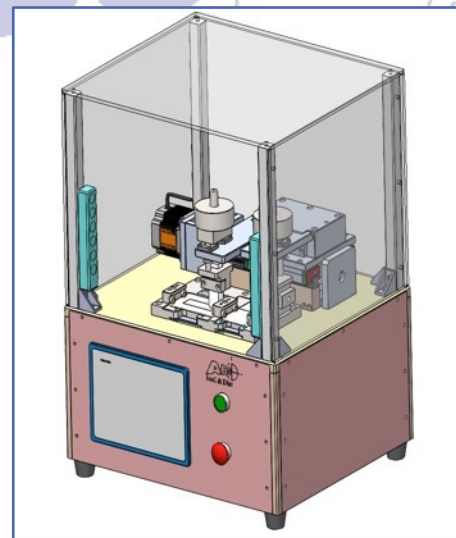
**TM-410-E - 0.710 MM EMBOSSED CARD
WARPAGE RAMP - 1.5**



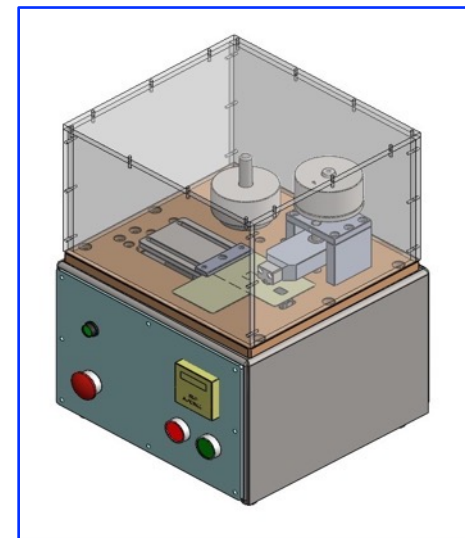
TM-416 - IMPACT RESISTANCE TESTER



MODULE IMPLANTER

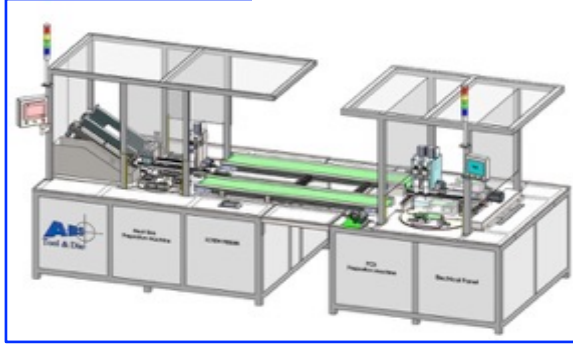


RUB TEST PREPARATION



TM-421 - THREE WHEEL TESTER

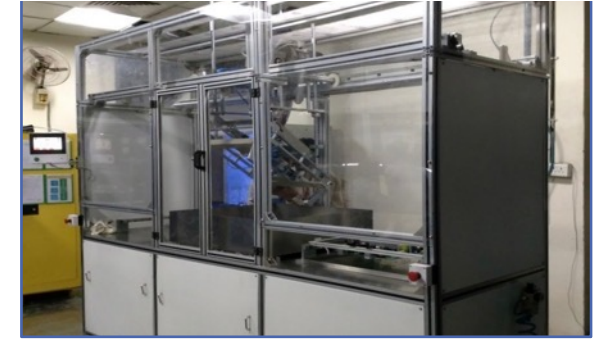
Special Purpose Machines



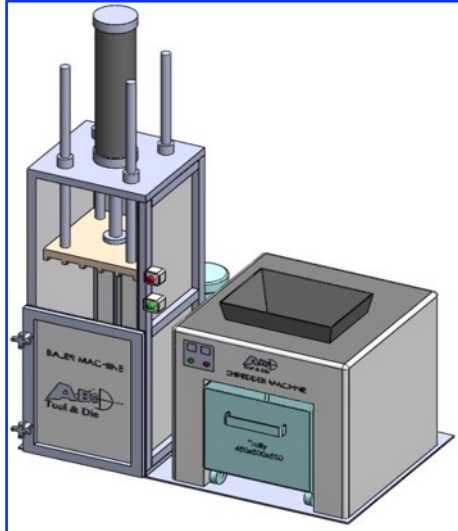
HEAT SINK & PCB PREPARATION MACHINE



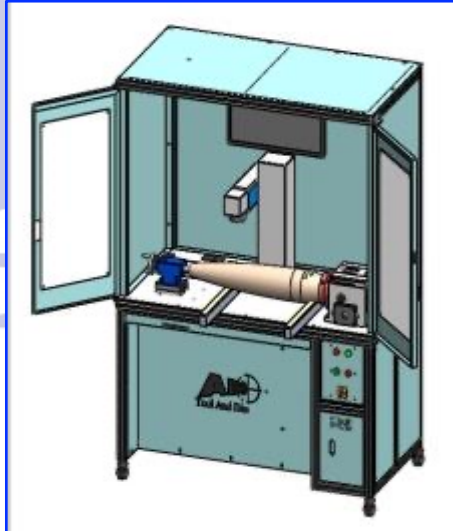
VISUAL QUALITY INSPECTION SYSTEM - RING



CONFORMAL COATING SYSTEM



BELAR & SHREDDER MACHINE



LASER MARKING MACHINE



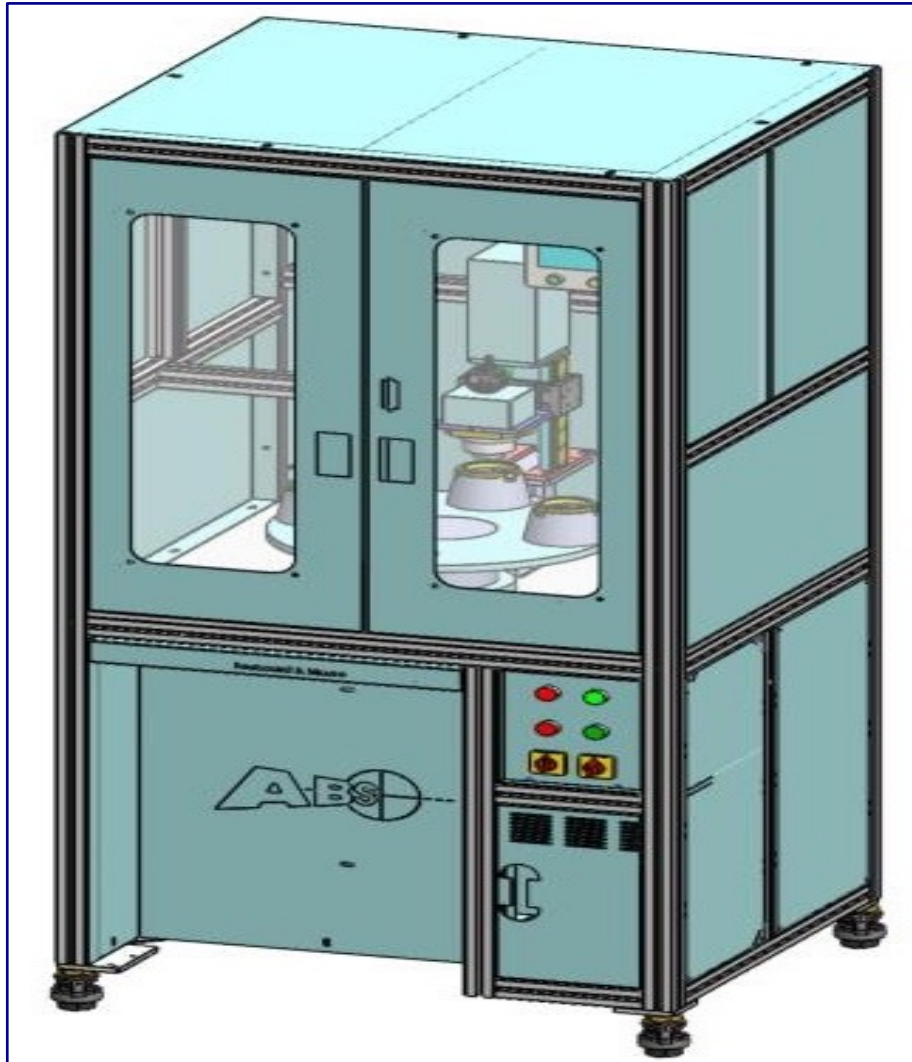
**VISUAL QUALITY INSPECTION SYSTEM -
MANUAL**



**VISUAL QUALITY INSPECTION SYSTEM -
AUTOMATIC**

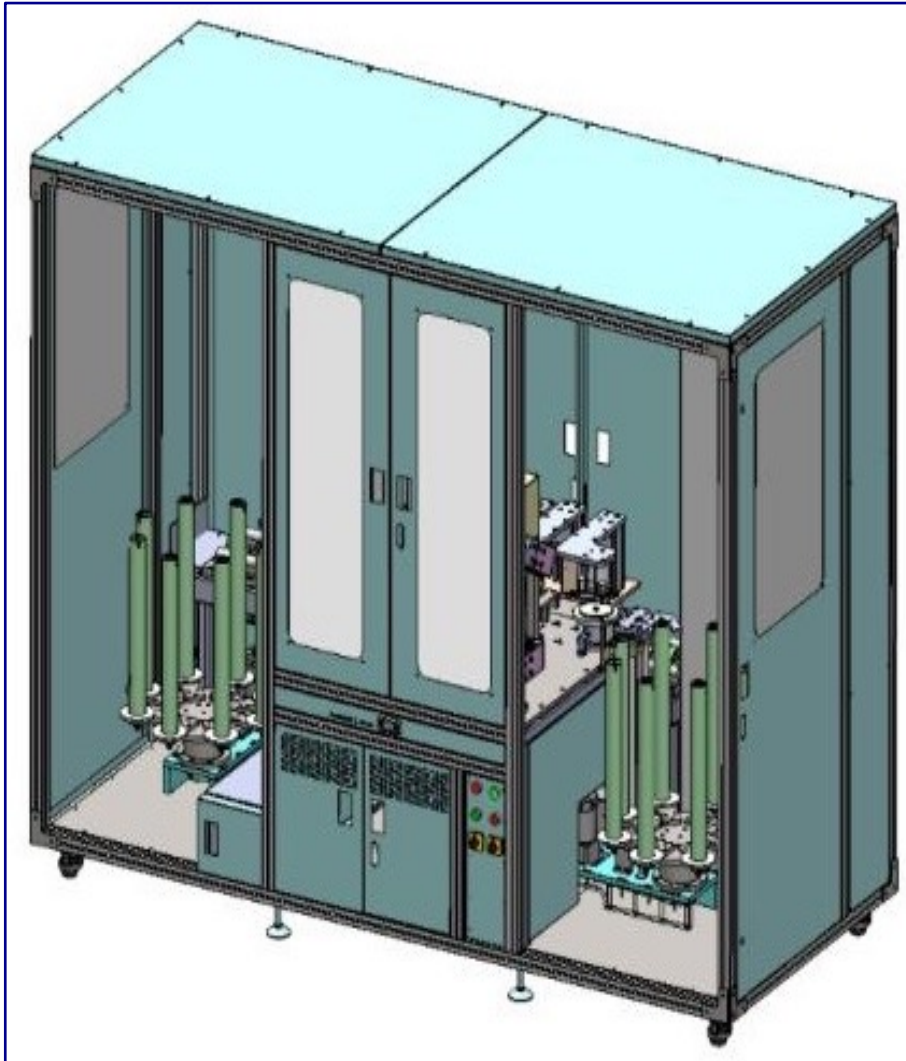
Stack Height Inspection Machine with Laser Marking.

Stack Height Machine for Inspection of Height through Cameras, Gauges and LVDT with Laser Marking for traceability for Automobile Synchro Ring Assembly.



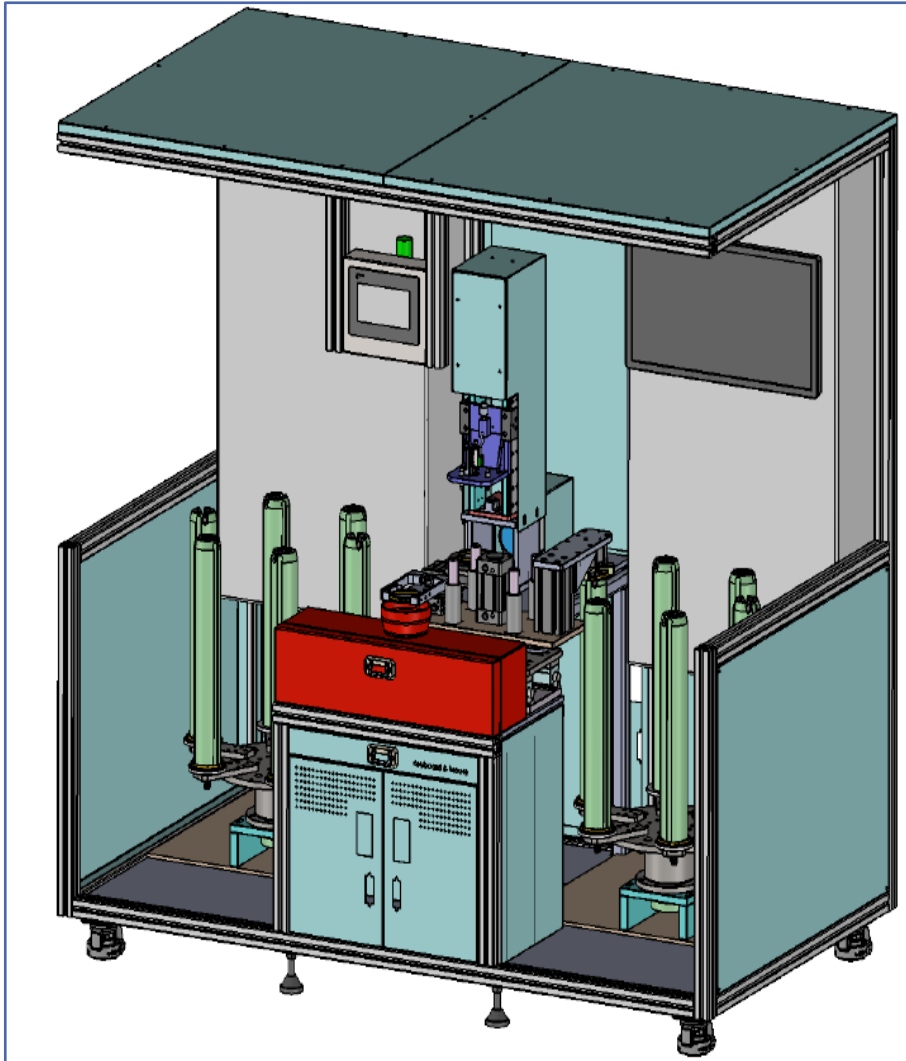
Auto Visual Inspection Machine with Laser Marking.

Auto Visual Inspection Machine for Inspection of Taper, Dia, Height & Thickness through Cameras, Gauges and LVDT with Laser Marking for traceability for Automobile Synchro Ring Assembly.



Offline Inspection Machine with Laser Marking.

Offline Checking Machine for Inspection of Taper, Dia, Height & Thickness through Gauges and LVDT with Laser Marking for Traceability for Automobile Synchro Ring Assembly.

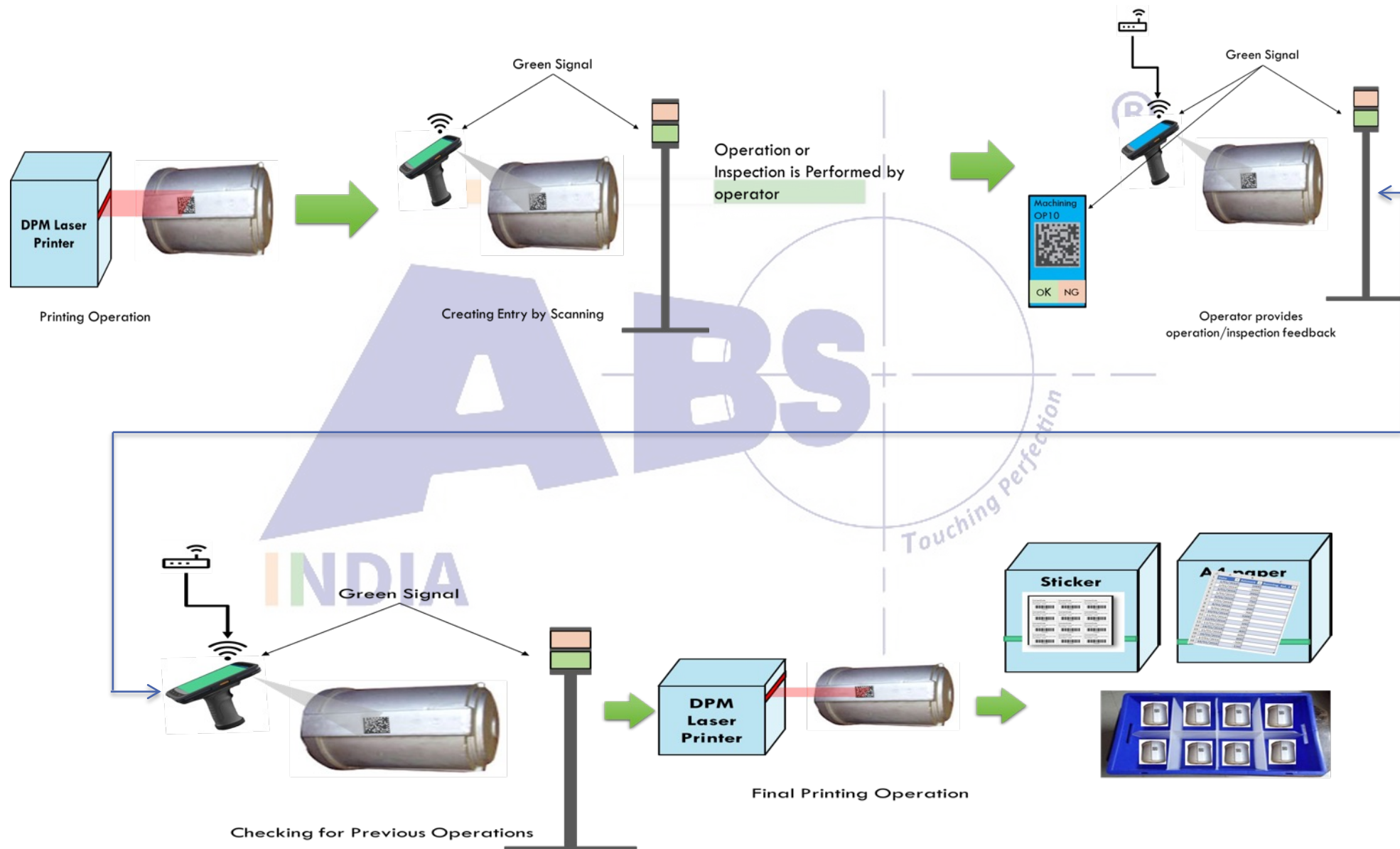


Ring Inspection Machine with Laser Marking.

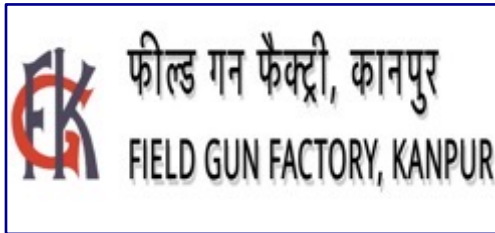
Ring Inspection Machine for Inspection of Stack Height, Thickness and Bore Dimension through Gauges and LVDT with Laser Marking for Traceability for Automobile Synchro Ring Assembly .



Part Traceability



Businesses: Defence & Aerospace



Businesses: Private Sector



Businesses: Global Sector





Contact Us

- Name: ABS Tool and Die Private Limited.
- Add: D 44, Sector 11, Noida 201301, Uttar Pradesh, India.
- Web: www.absgroupindia.com
- E-mail: abstooldie@absgroupindia.com
- Skype: absgroupindia
- Contact Details: +91-9899786775
+91-9811786775



धन्यवाद !
Thank You !
Shukran ! (شکرا)
Danke !
Merci !

